



Retail
listing

Shopping Centre



**BOWLER HOUSE
BLACKPOOL SHOPPING CENTRE, CORK**

To Let

Phase 4 Blackpool Shopping Centre

Blackpool , Cork

Bowler House is located alongside both the shopping centre which is anchored by Dunnes Stores opposite Blackpool Retail Park as well as Bank of Ireland, Xtravision, McDonalds etc. Occupiers in the retail park include Atlantic Homecare, Argos Extra, Maplin Electronics and we have just agreed a deal with Heaton's.

Negotiator
Leigh Hegarty
+353 (0) 21 4271371



To Let

Douglas Court Shopping Centre

Douglas , Cork

Douglas Court Shopping Centre is conveniently located in the heart of Douglas Village with easy access on to the South Link Road and just minutes drive from Cork City Centre.

Negotiator
Lia Dennehy
+353 (0) 21 4271371



To Let

Opera Lane

Opera Lane , Patrick Street

Opera Lane, which opened in October 2009, is located on Patrick Street. Retailers open and trading include H & M, Next, Gap, New Look, Tommy Hilfiger, CC & Viyella, River Island, Compu B, Therapie and Topshop / Topman.

Negotiator
Leigh Hegarty
+353 (0) 21 4271371



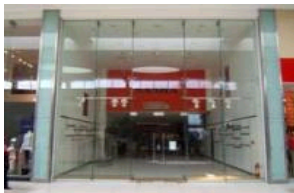
To Let

Half Moon Street 0 sq.m

Half Moon Street Scheme , Cork

Anchored by Boots (c. 40,000 sq.ft), Half Moon Street provides centrally located, large retail space in Cork City centre.

Negotiator
Leigh Hegarty
+353 (0) 21 4271371



To Let

Unit 17, Ballincollig Shopping Centre 289 sq.m

Main Street , Ballincollig, Co Cork

Ballincollig Shopping Centre is located within the heart of Ballincollig Town Centre and is one of Cork's largest property developments extending to c.90 acres. Ballincollig is located approx. 10 km west of Cork city centre and has direct access to the South Link Road.

Negotiator
Lia Dennehy
+353 (0) 21 4271371

Savills Ireland and the Vendor/Lessor give note that the particulars and information contained in this brochure do not form any part of any offer or contract and are for guidance only. The particulars, descriptions, dimensions, references to condition, permissions or licences for use or occupation, access and any other details, such as prices, rents or any other outgoings are for guidance only and are subject to change. Maps and plans are not to scale and measurements are approximate. Whilst care has been taken in the preparation of this brochure intending purchasers, Lessees or any third party should not rely on particulars and information contained in this brochure as statements of fact but must satisfy themselves as to the accuracy of details given to them. Neither Savills Ireland nor any of its employees have any authority to make or give any representation or warranty (express or implied) in relation to the property and neither Savills Ireland nor any of its employees nor the vendor or lessor shall be liable for any loss suffered by an intending purchaser/Lessee or any third party arising from the particulars or information contained in this brochure. Prices quoted are exclusive of VAT (unless otherwise stated) and all negotiations are conducted on the basis that the purchasers/lessees shall be liable for any VAT arising on the transaction. This brochure is issued by Savills Ireland on the understanding that any negotiations relating to the property are conducted through it. All maps produced by permission of the Ordnance Survey Ireland Licence No AU 001799 A, A© Government of Ireland.



Ballincollig Shopping Centre

Ballincollig , Co Cork

Ballincollig is one of Cork's largest suburbs with an immediate population of 16,340 persons, extending to 65,000 persons within a 10 minute drive zone and 293,000 persons within a 30 minute drive zone (CSO Census 2006). Ballincollig is c. 6 miles from Cork City Centre and is well connected to all major routes.

Negotiator
Lia Dennehy
+353 (0) 21 4271371

To Let



First Floor Unit

332 sq.m

Ballincollig Shopping Centre , Ballincollig, Co Cork

Ballincollig Town Centre is one of Cork's largest property developments extending to c. 90 acres and comprising of the Ballincollig Shopping Centre, Town Centre, Barrack Square Office Campus and Old Quarter Residential (c. 750 units). This is a large first floor unit located directly over a busy pharmacy in the shopping centre.

Negotiator
Lia Dennehy
+353 (0) 21 4271371

To Let



Mahon Point Shopping Centre

Mahon Point , Co. Cork

Located conveniently on the South Ring Road. The scheme is anchored by Tesco and Debenhams. Other retailers within the Centre include Oasis, River Island, A-Wear, Next, Zara and Monsoon to name but a few.

Negotiator
Leigh Hegarty
+353 (0) 21 4271371

To Let



Market Square Shopping Centre

Mallow , Co Cork

Market Square is located just off Main Street, Mallow and comprises a mixed use development of retail, office, cinema and residential. The total retail / office / cinema comprises approximately 20,000sq.m with the residential in the region of 5,000sq.m.

Negotiator
Lia Dennehy
+353 (0) 21 4271371

For Sale or To Let



Railway Square

Waterford

New edge of town mixed commercial development to include ground floor retail with offices and apartments overhead and basement car parking. This sensitively-designed development is multi-faceted and presents a sympathetic face to the streetscapes and spaces surrounding the new structures. To top it off Railway Square offers an eight screen multiplex cinema with all the modern features.

Negotiator
Leigh Hegarty
+353 (0) 21 4271371

To Let



Retail Units

Merchants Quay Shopping Centre , Cork

Merchants Quay is Cork City's largest shopping centre complex and occupies a prime location on the southern side of Patrick Street, Cork's main retailing street. It is anchored by M & S, Debenhams, Dunnes Stores and Supervalu.

Negotiator
Lia Dennehy
+353 (0) 21 4271371

To Let

Savills Ireland and the Vendor/Lessor give note that the particulars and information contained in this brochure do not form any part of any offer or contract and are for guidance only. The particulars, descriptions, dimensions, references to condition, permissions or licences for use or occupation, access and any other details, such as prices, rents or any other outgoings are for guidance only and are subject to change. Maps and plans are not to scale and measurements are approximate. Whilst care has been taken in the preparation of this brochure intending purchasers, Lessees or any third party should not rely on particulars and information contained in this brochure as statements of fact but must satisfy themselves as to the accuracy of details given to them. Neither Savills Ireland nor any of its employees have any authority to make or give any representation or warranty (express or implied) in relation to the property and neither Savills Ireland nor any of its employees nor the vendor or lessor shall be liable for any loss suffered by an intending purchaser/Lessees or any third party arising from the particulars or information contained in this brochure. Prices quoted are exclusive of VAT (unless otherwise stated) and all negotiations are conducted on the basis that the purchasers/lessees shall be liable for any VAT arising on the transaction. This brochure is issued by Savills Ireland on the understanding that any negotiations relating to the property are conducted through it. All maps produced by permission of the Ordnance Survey Ireland Licence No AU 001799 A, A© Government of Ireland.



The Showgrounds Shopping Centre

Clonmel , Co Tipperary

The Centre is located close to Clonmel Town Centre. It is anchored by Marks & Spencer and other retailers include Pamela Scott, Vila, Only, Jack N Jones, Name It, First Chapter, Hype Hair Salon and the newly opened Argos and Edinburgh Woollen Mills.

Negotiator
Lia Dennehy
+353 (0) 21 4271371

To Let



Charleville Town Centre

Charleville , Co Cork

Charleville Town Centre is a modern open air streetscape retail scheme located in the heart of Charleville Town. The development comprises a mix of retail and offices suited to a variety of uses. This scheme is a great addition to the town, an opportunity to bring new retailers to Charleville such as the anchor tenant Dunnes Stores.

Negotiator
Leigh Hegarty
+353 (0) 21 4271371

For Sale or To Let



Kiosk Unit 38A

32.5 sq.m

City Square Shopping Centre , Waterford

The property is located within City Square Shopping Centre located in the heart of Waterford City. City Square Shopping Centre is anchored by Debenhams and Dunnes Stores with other retailers such as River Island, Next, Wallis, Peter Marks, Adams Childrenswear, Jump Juice, The Early Learning Centre and Mulligans Pharmacy.

Negotiator
Lia Dennehy
+353 (0) 21 4271371

To Let

High Street



Ground Floor Retail Unit

43 sq.m

28 Washington Street West , Cork

The property comprises ground floor retail unit of c. 43sq.m (462sq.ft) fronting Washington Street West with rear access from James Street.

Negotiator
Ger McDonnell
+353 (0) 21 4271371

To Let



Prime Retail Premises

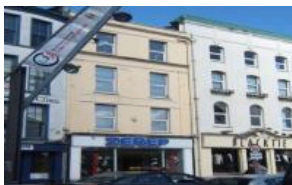
3611 sq.m

Former Co-Op Super Store , Mitchelstown, Co Cork

Mitchelstown is located on the main Cork to Dublin M8 primary route approximately 50kms north of Cork City. The property occupies a prime location in Mitchelstown Town Centre directly opposite New Market Square. The property comprises a mixture of two and three storey buildings with Supervalu occupying the ground floor.

Negotiator
Lia Dennehy
+353 (0) 21 4271371

To Let



124 Patrick Street

154 sq.m

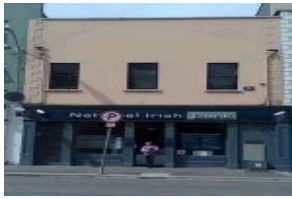
Cork

124 Patrick Street is located on the northern end of Patrick Street, it is opposite Merchants Quay Shopping Centre, Debenhams, Marks & Spencer, Brown Thomas to name a few. Neighbouring the unit are Black Tie, Schuh, A-Wear and Easons.

Negotiator
Lia Dennehy
+353 (0) 21 4271371

To Let

Savills Ireland and the Vendor/Lessor give note that the particulars and information contained in this brochure do not form any part of any offer or contract and are for guidance only. The particulars, descriptions, dimensions, references to condition, permissions or licences for use or occupation, access and any other details, such as prices, rents or any other outgoings are for guidance only and are subject to change. Maps and plans are not to scale and measurements are approximate. Whilst care has been taken in the preparation of this brochure intending purchasers, Lessees or any third party should not rely on particulars and information contained in this brochure as statements of fact but must satisfy themselves as to the accuracy of details given to them. Neither Savills Ireland nor any of its employees have any authority to make or give any representation or warranty (express or implied) in relation to the property and neither Savills Ireland nor any of its employees nor the vendor or lessor shall be liable for any loss suffered by an intending purchaser/Lessee or any third party arising from the particulars or information contained in this brochure. Prices quoted are exclusive of VAT (unless otherwise stated) and all negotiations are conducted on the basis that the purchasers/lessees shall be liable for any VAT arising on the transaction. This brochure is issued by Savills Ireland on the understanding that any negotiations relating to the property are conducted through it. All maps produced by permission of the Ordnance Survey Ireland Licence No AU 001799 A, A© Government of Ireland.



To Let

12 McCurtain Street

230 sq.m

Fermoy , Co Cork

This property is a mid terrace two storey building located on McCurtain Street close to the intersection with Pearse Square in the heart of Fermoy town centre. Nearby occupiers include Ulster Bank, O' Briens, Supermacs, Ladbroses and a number of public houses.

Negotiator
Lia Dennehy
+353 (0) 21 4271371



To Let

4 Washington Street West

29 sq.m

Cork City

The property comprises a ground floor retail unit on the southern side of Washington Street West. The property is approximately 28.8sq.m with strong profile on to Washington Street directly adjacent to Centra and neighboured by 4 Star Pizza and Costigans Public Bar.

Negotiator
Lia Dennehy
+353 (0) 21 4271371



To Let

5 / 6 O' Connell Street

371 sq.m

Clonmel , Co Tipperary

Former NIB property To Let by way of assignment / sub letting. Located on O' Connell Street one of Clonmel's principal retail streets. Neighbouring occupiers include New Look, Penneys, Heaton's, Boots and Dunnes Stores. Clonmel is the main retail centre for South Tipperary and is well connected to the strategic national road network via the N24 and the N8/M8 to surrounding towns such as Cashel and Carrick on Suir.

Negotiator
Lia Dennehy
+353 (0) 21 4271371



To Let

62 Main Street

179 sq.m

Killarney , Co Kerry

Former NIB property To Let by way of assignment / sub letting. Located on Main Street one of Killarney's principal retail streets. Neighbouring occupiers include Quills, Penneys, Sewells Pharmacy, The Kilkenny Shop, Keanes Jewellers. Killarney is a renowned tourist town with an immediate population of 13,497 (Census 2006).

Negotiator
Lia Dennehy
+353 (0) 21 4271371



To Let

National Irish Bank

337 sq.m

O' Connell Street , Ennis, Co Clare

The subject property is located on the south side of O' Connell Square in the heart of Ennis, at the junction between High Street and O' Connell Street.

Negotiator
Lia Dennehy
+353 (0) 21 4271371



To Let

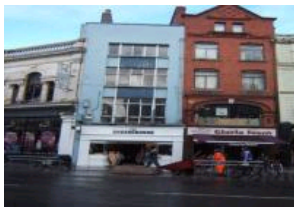
Prime Retail Opportunity

64 sq.m

118 Patrick Street , Cork

This property is ideally located on a high profile corner site on Patrick Street, Cork's principle retail street. The property measures c. 64.19 sq.m (691 sq.ft) and is available by way of an assignment of the existing 20 x 5 year lease, which commenced in November 1992.

Negotiator
Lia Dennehy
+353 (0) 21 4271371



To Let

Prime Retail Opportunity

32 sq.m

83 Patrick Street , Cork

The property is superbly located on Patrick Street Cork's prime Retail Street and is located beside Gloria Jeans and next to The Body Shop, and HMV.

Negotiator
Lia Dennehy
+353 (0) 21 4271371



To Let

Prime Retail Premises

58 sq.m

St Patrick's Bridge , Cork

High profile corner building in the heart of Cork City with the benefit of dual frontage to Bridge Street and Patrick's Bridge / Quay. This building benefits from high volumes of passing traffic.

Negotiator
Lia Dennehy
+353 (0) 21 4271371



To Let

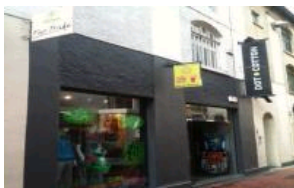
Retail Premises

68 sq.m

38 Princes Street , Cork

Prime retail premises located in the heart of Cork City Centre lying adjacent to Patrick Street Cork's principle retail thoroughfare and also running perpendicular to Oliver Plunkett Street.

Negotiator
Lia Dennehy
+353 (0) 21 4271371



To Let

Unit 18B French Church Street

101 sq.m

Cork

Prime modern ground and first floor retail unit located on French Church Street just off Patrick Street. The ground floor extends to 55.35sq.m and the first floor extends to 46.12sq.m. The entire unit measures c. 101sq.m. The unit has been fitted with modern glazed shop front and glazed doors.

Negotiator
Leigh Hegarty
+353 (0) 21 4271371



To Let

Unit 5A

88.4 sq.m

High Street , Wilton, Cork

This is a ground floor property adjoining Paddy Powers and Four Star Pizza. It enjoys excellent profile. Wilton Shopping Centre, anchored by Tesco & Penneys, is located close to this property and Cork University Hospital is opposite the property.

Negotiator
Lia Dennehy
+353 (0) 21 4271371



For Sale

Former Co-Op Super Store

1620 sq.m

Patrick Street , Fermoy, Co Cork

Fermoy is a busy market town located approximately 32kms north of Cork City, 32.5kms east of Mallow and 15kms south of Mitchelstown. The Co-Op is predominantly situated in a prime trading position on the south side of Patrick Street with an additional rear access from Connolly Street. The property comprises two adjoining buildings of two and three storeys.

Negotiator
Sam Daunt
+353 (0) 21 427 1371

Savills Ireland and the Vendor/Lessor give note that the particulars and information contained in this brochure do not form any part of any offer or contract and are for guidance only. The particulars, descriptions, dimensions, references to condition, permissions or licences for use or occupation, access and any other details, such as prices, rents or any other outgoings are for guidance only and are subject to change. Maps and plans are not to scale and measurements are approximate. Whilst care has been taken in the preparation of this brochure intending purchasers, Lessees or any third party should not rely on particulars and information contained in this brochure as statements of fact but must satisfy themselves as to the accuracy of details given to them. Neither Savills Ireland nor any of its employees have any authority to make or give any representation or warranty (express or implied) in relation to the property and neither Savills Ireland nor any of its employees nor the vendor or lessor shall be liable for any loss suffered by an intending purchaser/Lessees or any third party arising from the particulars or information contained in this brochure. Prices quoted are exclusive of VAT (unless otherwise stated) and all negotiations are conducted on the basis that the purchasers/lessees shall be liable for any VAT arising on the transaction. This brochure is issued by Savills Ireland on the understanding that any negotiations relating to the property are conducted through it. All maps produced by permission of the Ordnance Survey Ireland Licence No AU 001799 A, A© Government of Ireland.



Georges Quay

147 sq.m

Cork , Retail Unit

1 & 2 Georges Quay is a four storey office development which incorporates a retail / showroom unit on the ground floor. The property occupies a prominent position on Georges Quay. The retail unit measures 147sq.m (1,582.3sq.ft) and has its own independent access from Georges Quay.

Negotiator

Lia Dennehy

+353 (0) 21 4271371

To Let



Main Street

150.86 sq.m

Glin , Co Limerick

Glin is a small village situated on the N69 Limerick to Tralee / Listowel Road and situated 52kms west of Limerick City, 52kms east of Tralee, 36kms north west of Newcastlewest and 24kms north of Listowel. The subject property is located on the western side of the Main Street close to its junction on the N69.

Negotiator

Ger McDonnell

+353 (0) 21 4271371

For Sale



47, 48, 49 Parnell Street

Limerick

This property has a city centre location located within walking distance of O' Connell Street and William Street. It is in close proximity to Limerick Train and Bus Station. The property consists of a terrace of three two storey properties with No. 47 trading as a pharmacy with the two remaining buildings derelict and unoccupied.

Negotiator

Ger McDonnell

+353 (0) 21 4271371

For Sale



95 South Main Street

149 sq.m

Bandon , Co Cork

The property is located on the South Main Street in the heart of Bandon Town. The South Main Street lies between MacSwiney Quay to the north and St Patrick's Quay to the South. No.95 is located on the eastern end of the South Main Street close to the junction with Bridge Street. The South Main Street is Bandon's main thoroughfare and hosts a multitude of businesses.

Negotiator

Lia Dennehy

+353 (0) 21 4271371

To Let



Prime Retail Unit

418 sq.m

27a Washington Street , Cork

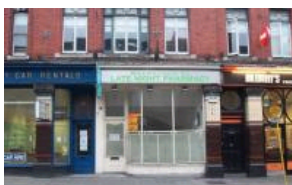
This ground retail unit is located on the southern side of Washington Street directly opposite The Courthouse close to the junction with Hanover Place. The unit was formerly occupied by Doran Interiors and is largely one open place space. The unit measures c. 418sq.m (4,500sq.ft). The unit is located in Cork's busy night life hub and is in close proximity to Patrick Street.

Negotiator

Lia Dennehy

+353 (0) 21 4271371

To Let



47B McCurtain Street

91.376 sq.m

Cork

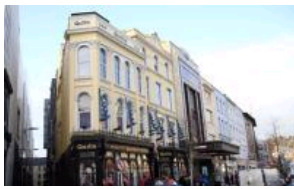
McCurtain Street is located on the north side of the River Lee and is one of the busiest thoroughfares in Cork City. It is home to a wide variety of retailers with the dominant use being food.

Negotiator

Lia Dennehy

+353 (0) 21 4271371

To Let



Prime Retail Unit

106 - 107 Patrick Street , Cork

This is a landmark building superbly located on Patrick Street adjacent to the newly refurbished Dunnes Stores and directly opposite Brown Thomas. Patrick Street is Corks main retail thoroughfare and hosts the likes of Marks and Spencers, Debenhams, Easons, A-Wear, Penneys, Vodafone, Tommy Hilfiger, Dorothy Perkins, Compu B, Monsoon, Lifestyle Sports, French Connection, Oasis, Wallis to name but a few.

Negotiator
Peter O'Meara
+353 (0) 21 4271371

To Let

Suburban



Showroom Premises

278 sq.m

Hollymount Industrial Estate , Blarney Road

The property is located in Hollymount Industrial Estate, Blarney Road Cork which is approx 2.6km north west of Cork City Centre. The property is located on the junction of Harbour View Road and Blarney Road, it benefits from an excellent corner profile.

Negotiator
Niall Guerin
+353 (0) 21 4271371

To Let



Retail Units

Donnybrook Hill , Cork

The property is located on the western side of Donnybrook Hill approximately 1km south of Douglas Village and within close proximity to commercial business located at the base of Donnybrook Hill.

Negotiator
Lia Dennehy
+353 (0) 21 4271371

To Let

Retail Park



Blackpool Block E

114 sq.m

Block E, Blackpool Retail Park , Blackpool, Cork

This high profile retail unit is located alongside Heatons Department Store and benefits from direct access to the main Cork / Limerick road.

Negotiator
Leigh Hegarty
+353 (0) 21 4271371

To Let



Blackpool Block F

0 sq.m

Blackpool Retail Park , Blackpool, Cork

Located in Blackpool Retail Park where retailers include Atlantic Homecare, Heatons, Next at Home, Lifestyle Sports and Argos Extra.

Negotiator
Leigh Hegarty
+353 (0) 21 4271371

For Sale or To Let



Former 4 Home Super Store

2479 sq.m

WestCity Retail Park , Ballincollig, Co Cork

Ballincollig is located approximately 9km west of Cork City with a population of c. 16,340 persons. The subject property is located in Ballincollig town centre and accommodation measures c. 2,479 sq.m plus a Garden Centre of approximately 774sq.m.

Negotiator
Lia Dennehy
+353 (0) 21 4271371

To Let

Retail Warehouse Units

Eastgate Retail Park , Little Island, Cork

Ideal gateway location immediately adjacent to Jack Lynch Tunnel to service all the eastern suburbs of Cork City. Located at Little Island interchange with Eastern Parkway and within 15 minutes of Cork Airport. Convenient to Cork City, the rapidly expanding suburbs and satellite towns including Midleton, Carrigtwohill, Cobh, Watergrasshill, Glanmire and Glounthaune.

Negotiator
Peter O'Meara
+353 (0) 21 4271371

To Let

High Profile Retail Showrooms

749.18 sq.m

Limerick Road , Mallow

The property is a high profile car showroom premises situated in a pivotal trading location on the outskirts of Mallow town. The property has extensive frontage of approximately 80 metres to the N20 (Limerick to Cork route) with adjoining occupiers including Keary's Toyota, Statoil, An Post and Advance Tyres.

Negotiator
Ger McDonnell
+353 (0) 21 4271371

For Sale or To Let

Retail Warehouse Premises

1625 sq.m

Parkway Retail Park , Limerick

Parkway Retail Park is Limerick's busiest retail park located on the N7 the main Limerick / Dublin Road. The retail park is located within close proximity to Castletroy, the University of Limerick and is also within easy access of Limerick City Centre.

Negotiator
Lia Dennehy
+353 (0) 21 4271371

To Let

Restaurant / Café / Pub

Above BK2 Bar

290 sq.m

First Floor Restaurant , Glanmire, Co Cork

Located in the heart of Glanmire Village north east of Cork City. Neighbouring occupiers include Hazelwood and Crestfield Shopping Centres, Supervalu, Glanmire Credit Union, Carry Out and Bank of Ireland. The restaurant (former Bucknuti Restaurant) is located on the first floor above BK2 Bar.

Negotiator
Lia Dennehy
+353 (0) 21 4271371

To Let

Cafe Opportunity, Main Street

146 sq.m

Ballincollig Town Centre , Ballincollig, Cork

This cafe opportunity is located in the Ballincollig Town Centre development which extends to c. 90 acres. Close to the Office Campus and Ballincollig Shopping Centre which boasts retailers such as Dunnes Stores, New Look, Easons and O' Brien's Sandwich Bar.

Negotiator
Lia Dennehy
+353 (0) 21 4271371

For Sale or To Let

Paddy The Farmers Bar

Old Blackrock Road / Southern Road , Cork

Part two storey/part three storey semi detached structure with a pub and off licence at ground floor level and nine apartments overhead. High profile location close to the City Centre and enjoys large volumes of passing traffic along with a large residential catchment area within close proximity.

Negotiator
Isobel O'Regan
+353 (0) 21 4271371

For Sale

Restaurant Unit

557 sq.m

Parkway Retail Park , Limerick

Parkway Retail Park is Limerick's busiest retail park, located on the N7 the main Limerick / Dublin Road. The retail park is located within close proximity to Castletroy, the University of Limerick and is also within easy access of Limerick City. The unit is located at the entrance to Parkway Retail Park.

Negotiator

Lia Dennehy

+353 (0) 21 4271371

To Let

Formers Lovetts Restaurant

Churchyard Lane , Well Road, Cork

The former Lovetts Restaurant is situated on The Well Road just a short distance from Douglas Village. The property measures approximately 227sq.m at ground floor, c. 185sq.m at first floor and 29sq.m at basement level.

Negotiator

Lia Dennehy

+353 (0) 21 4271371

To Let

Medical, Crèche

Mallow Primary Healthcare Centre

6503 sq.m

Gould's Hill , Mallow, Co Cork

Mallow Primary Healthcare Centre would be the first integrated Health Care Centre of its kind in Ireland. The Building total is 70,000sq.ft and will have 17 G.P's and 8 practice nurses along with the H.S.E Primary Care Teams and other ancillary health care service providers.

Negotiator

Lia Dennehy

+353 (0) 21 4271371

To Let

Medical Suites/Offices Cork Road Clinic

278 sq.m

Old Cork Road , Mallow, Co Cork

The property is suitably located on the Old Cork Road which benefits from ease of access to the N20 Cork / Limerick Road and its proximity to Mallow Town Centre. The area is mixed in character with a large surrounding residential area along with convenience stores, pharmacy and petrol station.

Negotiator

Lia Dennehy

+353 (0) 21 4271371

To Let

Other

Prime First Floor Units

177 sq.m

Fox & Hounds Retail Centre , Ballyvolane, Co Cork

Prime First Floor Units available from c. 68 - 177sq.m capable of being subdivided. The Fox & Hounds Retail Centre commands a prominent position at Ballyvolane Cross opposite Dunnes Stores Shopping Centre and adjacent to Lidl Foodstore, approximately 3 km from the city centre. This a high profile corner site, with access to the Rathcooney and Ballyhooley Roads.

Negotiator

Lia Dennehy

+353 (0) 21 4271371

To Let

Rushbrooke Centre

153 sq.m

Rushbrooke Links , Cobh, Co Cork

The Rushbrooke Centre is located in Cobh which benefits from easy access to the N25 South Ring Road and close proximity to Cork City Centre. The last retail / medical unit and first floor offices are remaining in the scheme.

Negotiator

Lia Dennehy

+353 (0) 21 4271371

For Sale or To Let

Showroom, Forecourt & Development Site

455.78 sq.m

Blarney Business Park , Mallow Road, Cork

Blarney Business Park is strategically located on the eastern side of the N22 Mallow Road approx 5kms from the outskirts of Cork City.

Negotiator
Denis O'Donoghue
+353 (0) 21 4271371

For Sale or To Let

Unit to Let

146 sq.m

Caherdavin , Limerick

Caherdavin Neighbourhood Centre is located approx 3km north of Limerick City Centre fronting the main Ennis Road. The centre is in close proximity to Limerick Institute of Technology and Thomand Park with a large residential hinterland nearby.

Negotiator
Ger McDonnell
+353 (0) 21 4271371

To Let

Retail Unit with Ancillary Parking

166 sq.m

Sharman Crawford Street , Cork

Retail/ Showroom unit c. 166.34 sq m located adjacent to St.Finbarrs multi storey car park with parking for up to 6 cars.

Negotiator
Lia Dennehy
+353 (0) 21 4271371

For Sale

Former Co-Op Store Annacotty

2034 sq.m

Annacotty , Co Limerick

The property was the former Annacotty Co-Operative Society, which was founded in the 1890s. Annacotty is located approximately 7km from Limerick City Centre, accessed via the N7. It is strategically located near the Limerick Southern Ring Road giving you easy access to the new M7.

Negotiator
Lia Dennehy
+353 (0) 21 4271371

For Sale or To Let

Former Branch - due to relocation to new branch premises

134 sq.m

Main Street, Tramore , Co Waterford

Tramore is a popular seaside resort approximately 12kms south of Waterford City. The subject property comprises a mid terraced three storey building with enclosed yard to the rear.

Negotiator
Ger McDonnell
+353 (0) 21 4271371

For Sale or To Let

City Square

Watercourse Road , Cork

City Square is a unique mixed commercial/residential development, centrally located in Lady's Well, just c. 500 metres from the city centre and with extensive frontage on to Watercourse Road. The scheme benefits from easy access to the N20, main Cork to Limerick Road (which runs parallel to Watercourse Road), Cork City Centre and The Jack Lynch Tunnel.

Negotiator
Lia Dennehy
+353 (0) 21 4271371

For Sale or To Let

Ground Floor Retail Units

Ballincollig Town Centre , Main Street, Ballincollig, Co Cork

Ballincollig Town Centre links Ballincollig Shopping Centre with the Office Campus and has direct access to the Main Street.

Negotiator
Lia Dennehy
+353 (0) 21 4271371

For Sale or To Let

Retail Unit

236 sq.m

Lancaster Gate , Western Road, Cork

Lancaster Gate is an exclusive development located in one of the most sought after quarters of the City, situated on the former Jury's Hotel site on the Western Road between University College, Cork and the City Centre. The scheme comprises 182 bed Jury's Hotel, Leisure Spa and c. 300 premium apartments. The scheme also benefits from surface and basement car parking.

Negotiator
Leigh Hegarty
+353 (0) 21 4271371

For Sale or To Let

City Gate Park

4470 sq.m

Mahon , Cork

Mahon, Corks premier retail destination. City Gate Park is situated at the entrance to Mahon Point Shopping Centre. City Gate Park comprises a 5 storey commercial development with retail at ground floor. 40% of the overall floor space already pre-sold to Quest. Sizes available from 94 sq m to 4,470 sq m. Due for completion Q2 2012.

Negotiator
Peter O'Meara
+353 (0) 21 4271371

For Sale or To Let

6 Lapps Quay, Cork

342 sq.m

Ground Floor High Profile Retail / Showroom Unit

The property is well located on Clontarf Street directly opposite The Clarion Hotel. 6 Lapps Quay comprises a 6 storey office building with retail on the ground floor. Lapps Quay is located approx 5 min walk from Patrick Street. It is considered one of Cork city's busiest office destinations. Occupiers include Deloitte & Touche, Fitzgerald Solicitors, La Cr me, Bord Gais and Morgan McKinley.

Negotiator
Lia Dennehy
+353 (0) 21 4271371

To Let

Savills Ireland and the Vendor/Lessor give note that the particulars and information contained in this brochure do not form any part of any offer or contract and are for guidance only. The particulars, descriptions, dimensions, references to condition, permissions or licences for use or occupation, access and any other details, such as prices, rents or any other outgoings are for guidance only and are subject to change. Maps and plans are not to scale and measurements are approximate. Whilst care has been taken in the preparation of this brochure intending purchasers, Lessees or any third party should not rely on particulars and information contained in this brochure as statements of fact but must satisfy themselves as to the accuracy of details given to them. Neither Savills Ireland nor any of its employees have any authority to make or give any representation or warranty (express or implied) in relation to the property and neither Savills Ireland nor any of its employees nor the vendor or lessor shall be liable for any loss suffered by an intending purchaser/Lessees or any third party arising from the particulars or information contained in this brochure. Prices quoted are exclusive of VAT (unless otherwise stated) and all negotiations are conducted on the basis that the purchasers/lessees shall be liable for any VAT arising on the transaction. This brochure is issued by Savills Ireland on the understanding that any negotiations relating to the property are conducted through it. All maps produced by permission of the Ordnance Survey Ireland Licence No AU 001799  ,   Government of Ireland.